



Malheur National Forest

Forest Service News Release

Contact: Amy Franklin (541) 620-3365

SM.FS.malpubinfo@usda.gov

www.fs.usda.gov/malheur

X: [@MalheurNF](https://twitter.com/MalheurNF)

Facebook: www.facebook.com/MalheurNationalForest

Malheur National Forest Southern Area Closure

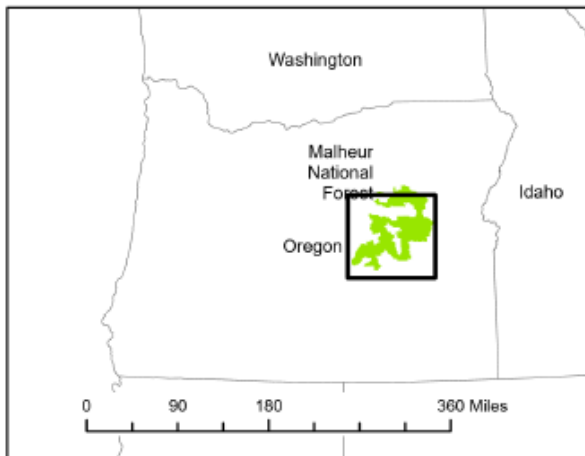
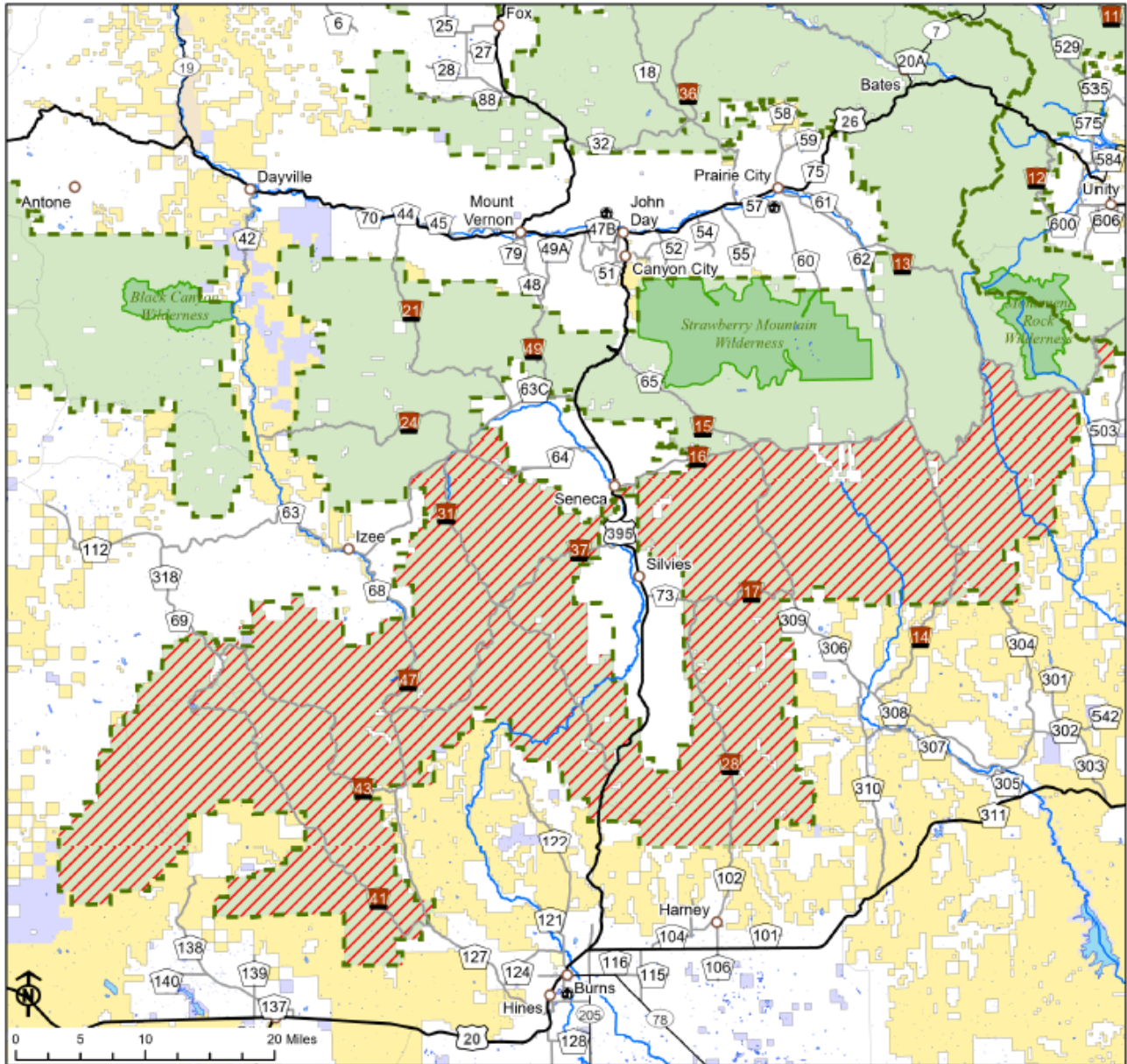
John Day, Prairie City and Hines, Ore. (August 1, 2024) – The Malheur National Forest has issued a new area closure. To protect public health and safety, fire managers have closed the area described below due to fire activity and fire suppression operations. This closure will be effective August 1, 2024, through December 31, 2024, unless rescinded sooner. This Forest Order rescinds and replaces the previous Falls Area Fire Closure #3 and the Temporary Malheur Forest Closure Order.

Closure Area Description:

- South of Grant County Road 63 following the National Forest boundary to Highway 395C, south of Seneca.
- Highway 395C south of Seneca following the National Forest Boundary to Forest Service Road 1600 to the eastern boarder of the Malheur National Forest. All National Forest lands to the south of Forest Service Road 1600.
- The entirety of the Emigrant Creek Ranger District on the Malheur National Forest.

A detailed map of the closure is included.

For more information on the fires visit: <https://inciweb.wildfire.gov/>



**Malheur National Forest
Southern Area Closure
Exhibit A
Closure Number 06-04-00-24-17**

Legend

- | | | | |
|---|---------------------------|---|-------------------------------|
|  | Area Closure |  | National Park Service |
|  | National Forest Land |  | Other Federal Land |
|  | Bureau of Land Management |  | State Land |
|  | Bureau of Indian Affairs |  | Other Land, Including Private |

